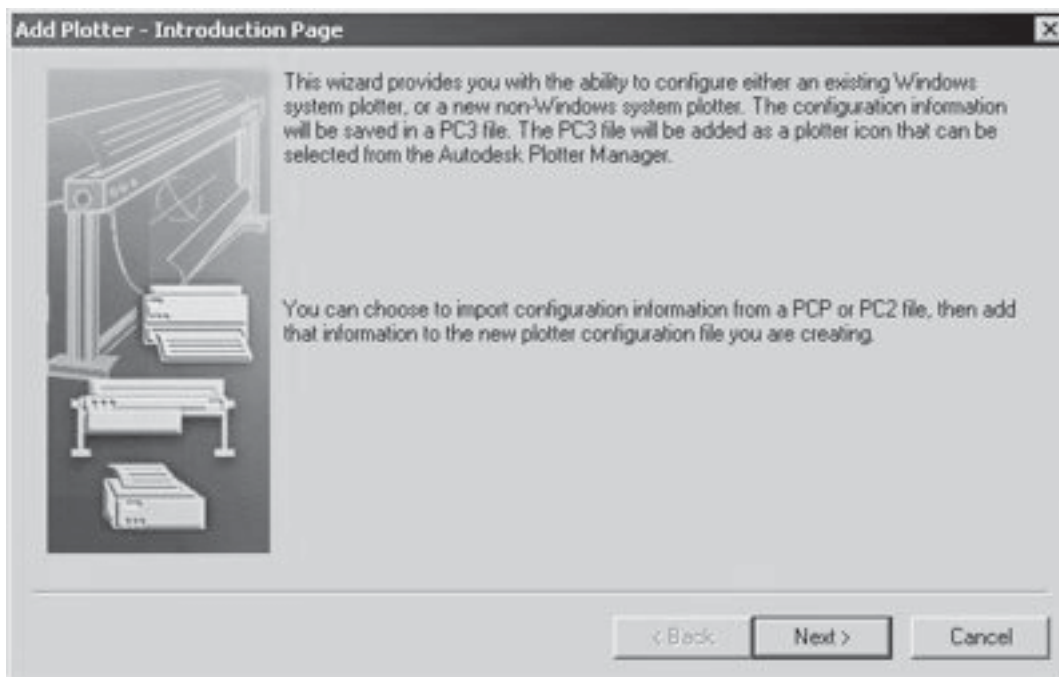


01

In the File menu, select Plotter Manager.

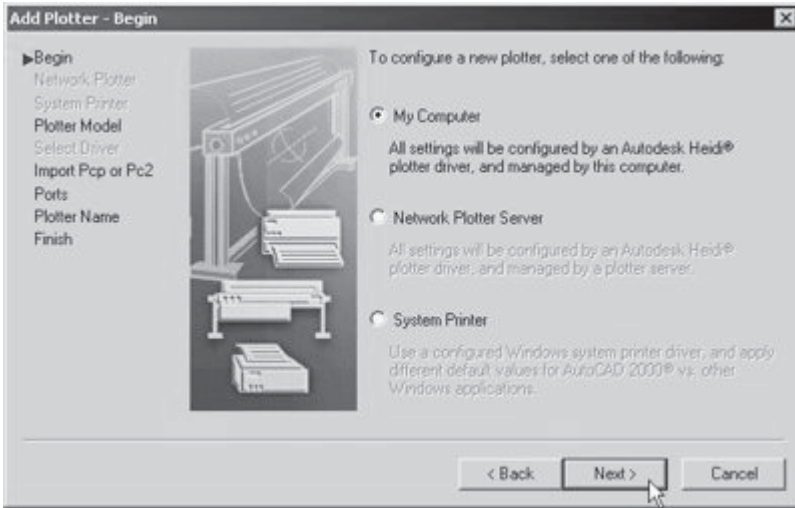
02

Double-click the Add-A-Plotter Wizard icon.



03

Read the introduction, if you wish, and click "Next."

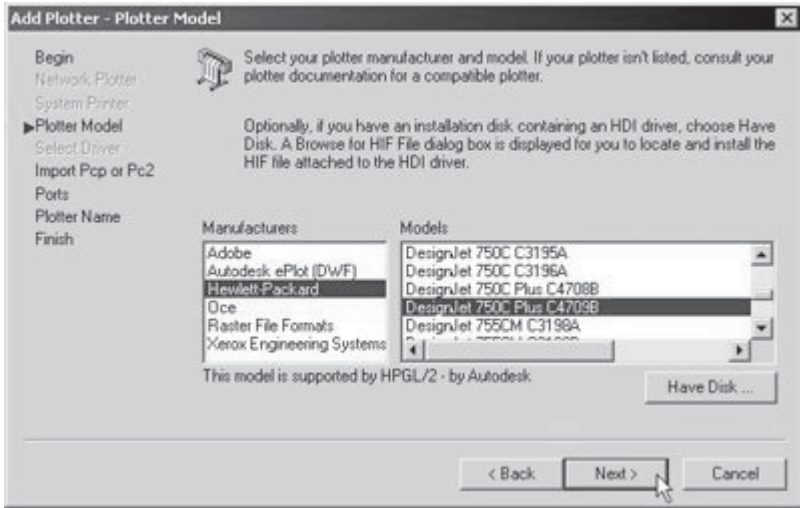


04

Select “My Computer” and click “Next.”

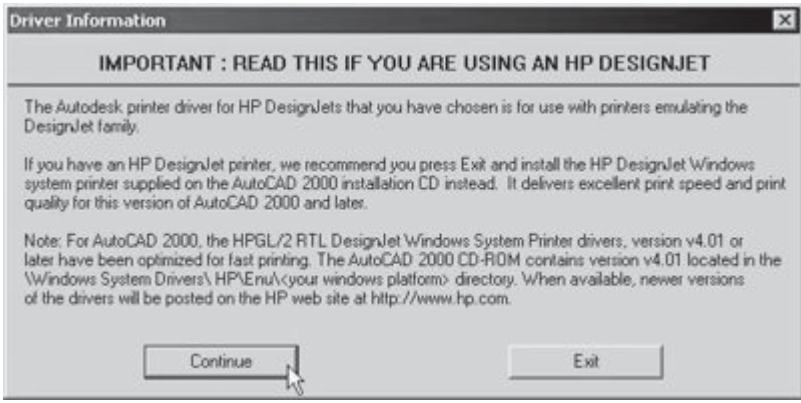
05

In the Plotter Model window, select “Hewlett-Packard” on the left and “DesignJet 750C Plus C4709B” on the right. Click “Next.”



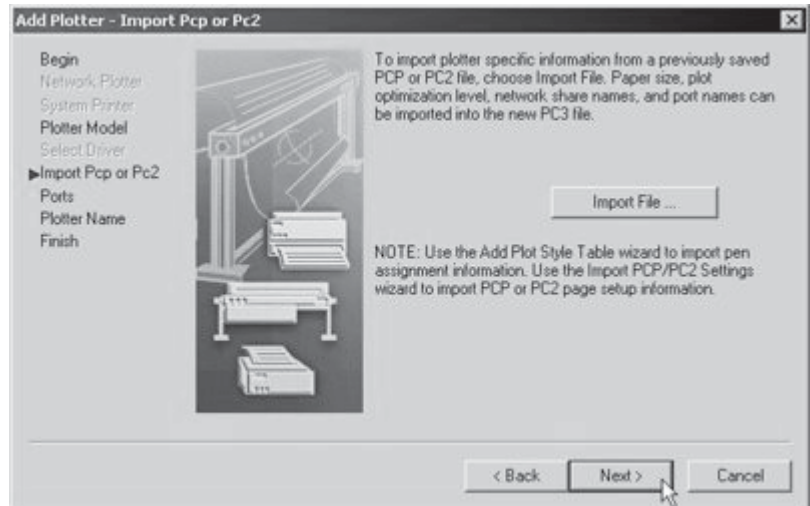
06

Pay no mind to the Important Message. Click “Continue.”



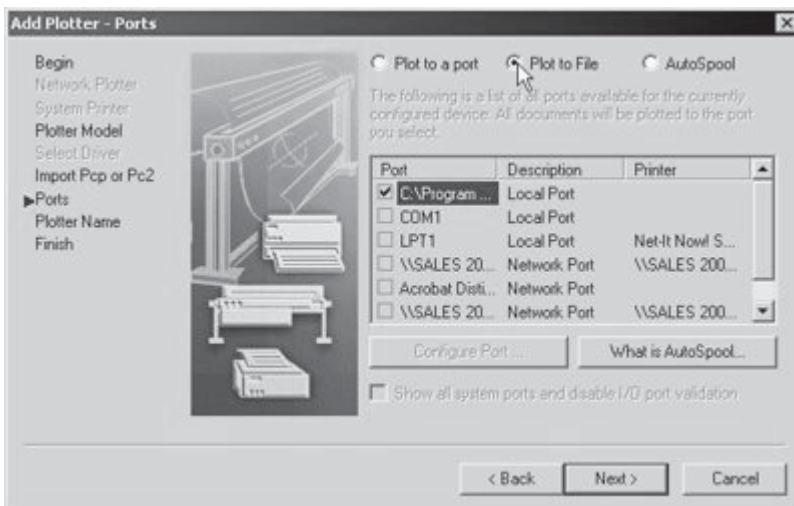
07

You don't need to import previous plotter information, so simply click "Continue."



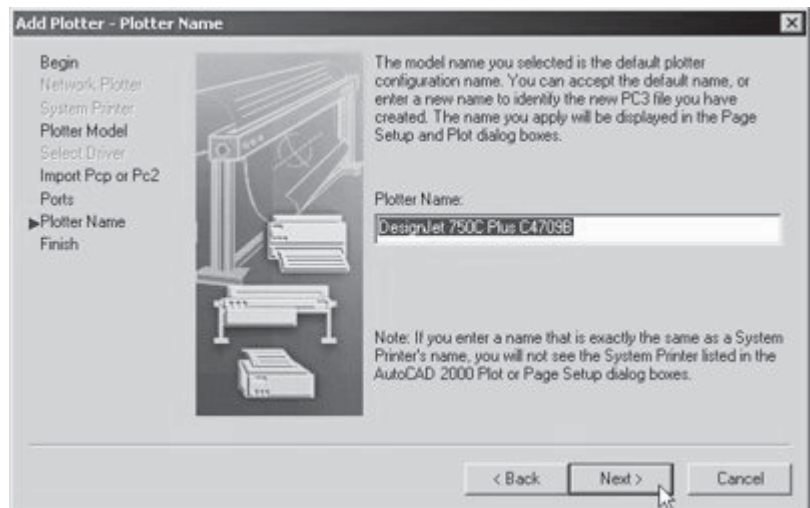
08

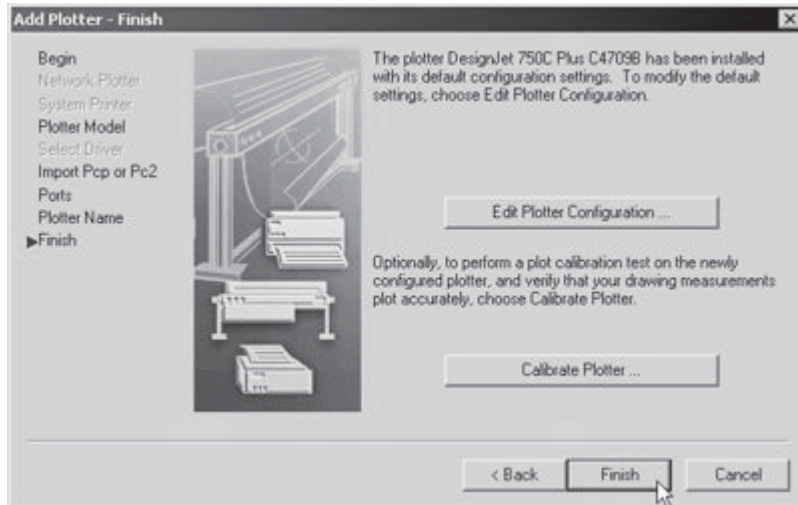
Select "Plot to File."  
Click "Next."



09

Leave the plotter name as it is. Click "Next."





10

Click “Finish.” The new DesignJet plotter icon will appear in the Plotters window.



#### NOTE

©2001 This document is provided as a service to customers of Best Imaging Solutions, Inc. All rights reserved. AutoCAD is a registered trademark of Autodesk.