

# AutoCAD® 14 Plotter Configuration



01

To begin the configuration session, type CONFIG in the AutoCAD command line and hit ENTER.

OR

In the Tools menu (as seen to the left,) select Preferences.

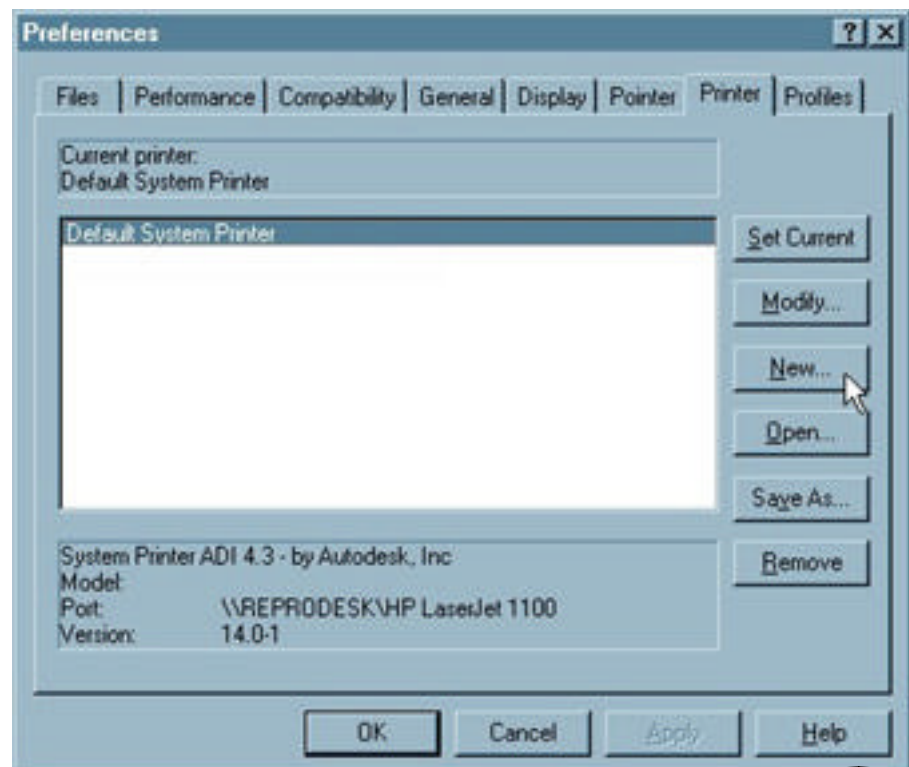
The Preferences window will open.

02

Select the Printer tab.

03

Click "New."





04

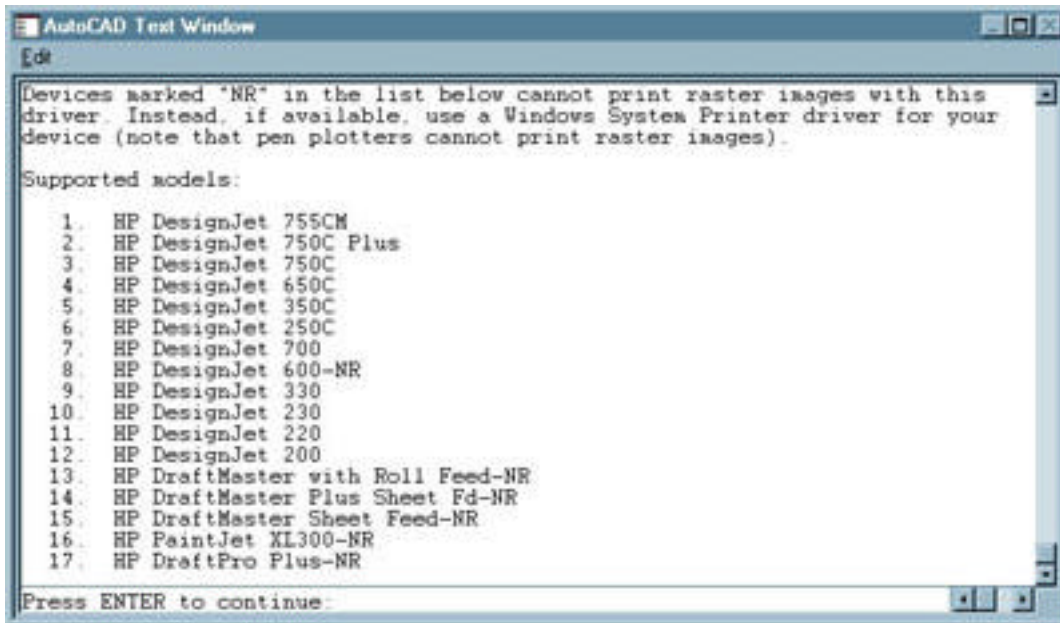
In the Add-A-Printer window, select “Hewlett-Packard HP-GL2 devices.”

05

Type “Best Imaging Solutions” in the description box.

06

Click “OK.”



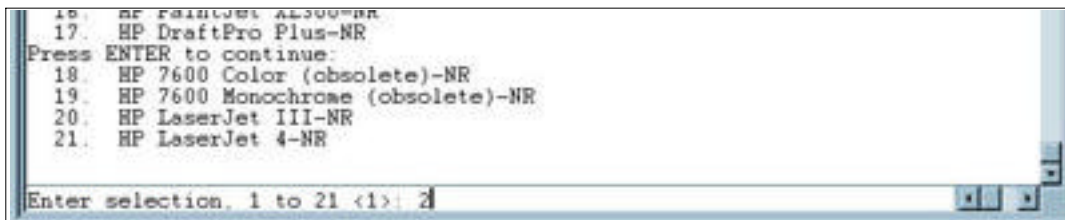
```
AutoCAD Test Window
[edit]
Devices marked "NR" in the list below cannot print raster images with this driver. Instead, if available, use a Windows System Printer driver for your device (note that pen plotters cannot print raster images).

Supported models:
1. HP DesignJet 755CM
2. HP DesignJet 750C Plus
3. HP DesignJet 750C
4. HP DesignJet 650C
5. HP DesignJet 350C
6. HP DesignJet 250C
7. HP DesignJet 700
8. HP DesignJet 600-NR
9. HP DesignJet 330
10. HP DesignJet 230
11. HP DesignJet 220
12. HP DesignJet 200
13. HP DraftMaster with Roll Feed-NR
14. HP DraftMaster Plus Sheet Fd-NR
15. HP DraftMaster Sheet Feed-NR
16. HP PaintJet XL300-NR
17. HP DraftPro Plus-NR

Press ENTER to continue:
```

07

AutoCAD will show only as much text as will fit. Hit ENTER to scroll to the bottom of the list.

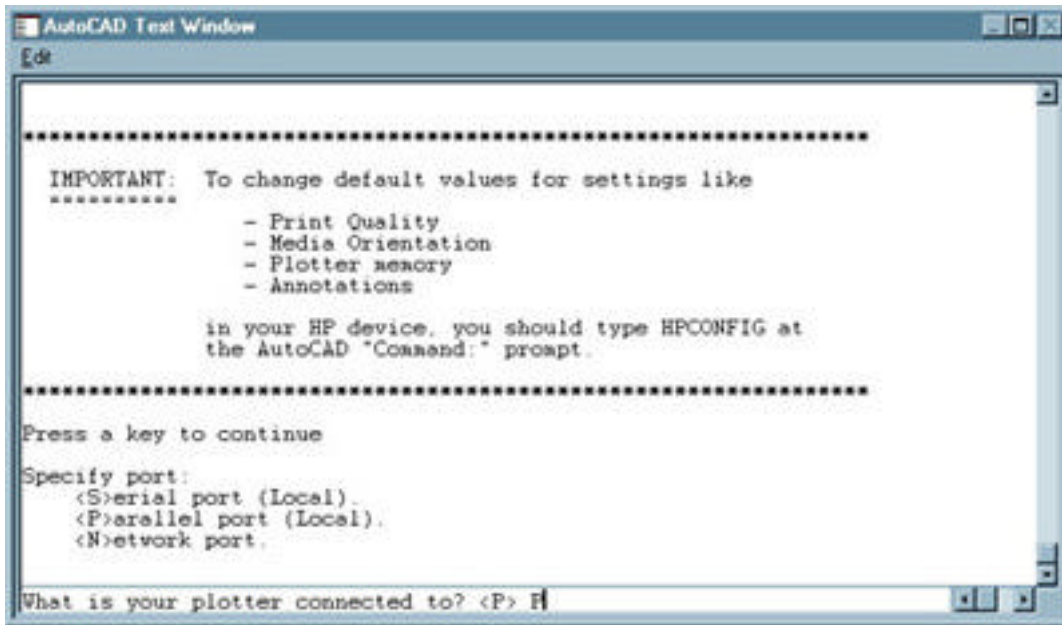


```
16. HP PaintJet XL300-NR
17. HP DraftPro Plus-NR
Press ENTER to continue:
18. HP 7600 Color (obsolete)-NR
19. HP 7600 Monochrome (obsolete)-NR
20. HP LaserJet III-NR
21. HP LaserJet 4-NR

Enter selection, 1 to 21 <1>: 2
```

08

Type the number **2** for “HP DesignJet 750C Plus.” Then hit the ENTER key.



09

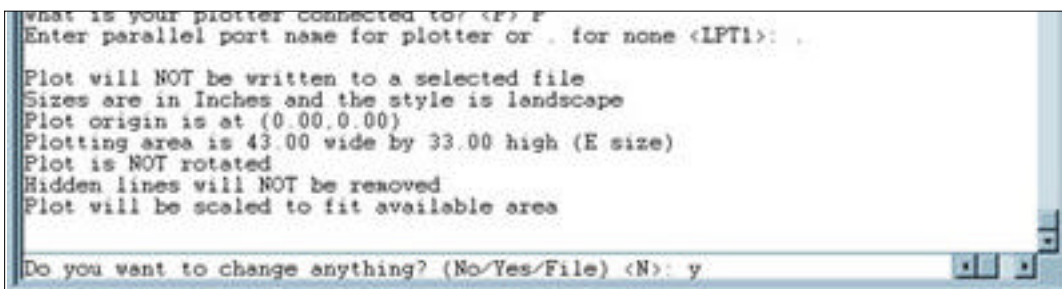
Press a key after reading the Important Message.

10

To specify the parallel port, type **P** and hit ENTER

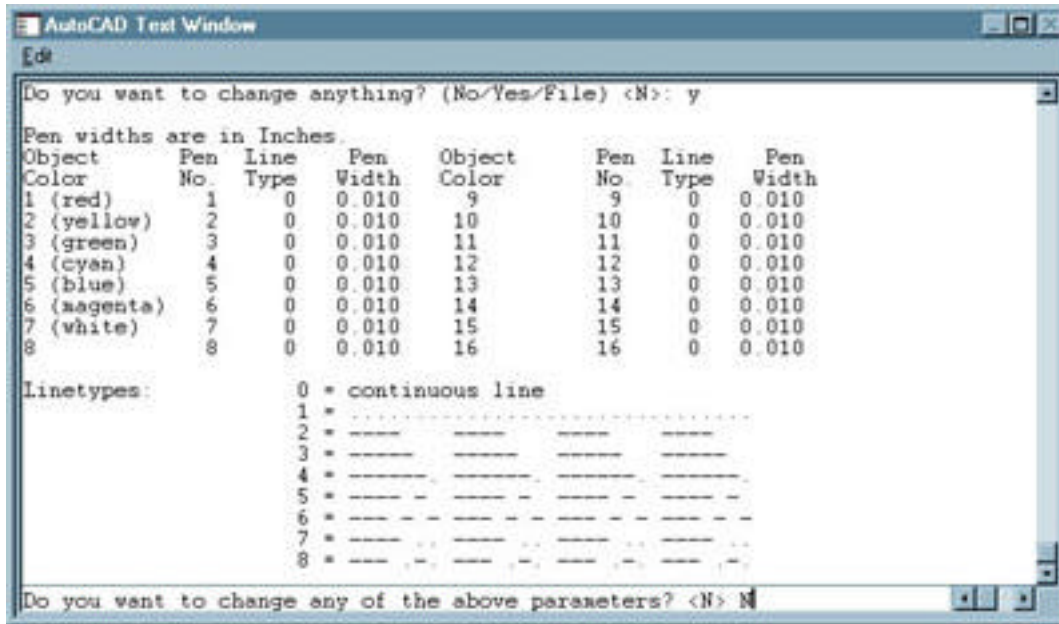
11

The next selection is for port name. The default is LPT1. You do not want that. Type a period (or "dot" in internet parlance) and hit ENTER.



12

Type **Y** to the "change anything" question. Hit ENTER.



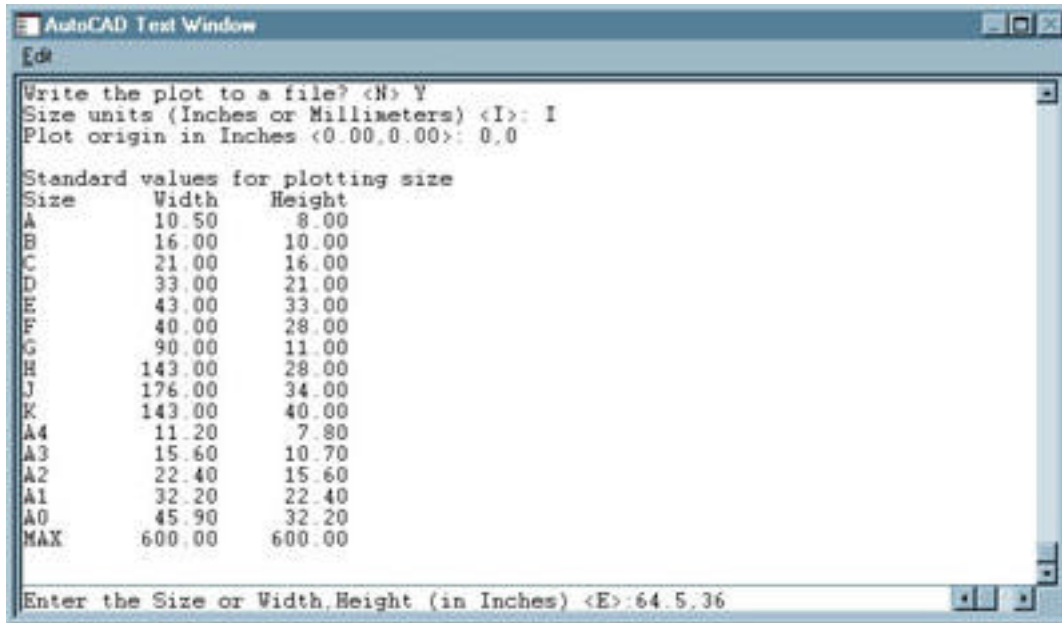
14

Type **N** and hit ENTER to avoid changing above parameters.

15

Answer the questions that follow in this manner:

- Would you like to calibrate your plotter? **N**.
- Write the plot to a file? **Y**.
- Size units (Inches or Millimeters) **I**.
- Plot origin in inches: **0,0** (that's zero, zero).



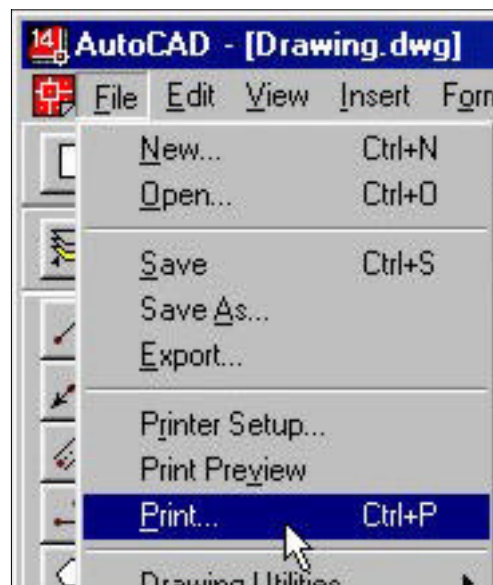
16

- For the width, height type **64.5,36** and hit ENTER.
- Rotate plot clockwise 0/90/180/270 degrees: **0**.
- Remove hidden lines? **N**.
- Plotted Inches = Drawing Units or FIT or ? **F**.
- In the Preferences window, click “OK” to finish setting up the plotter.

## Setting AutoCAD's Default Plotter

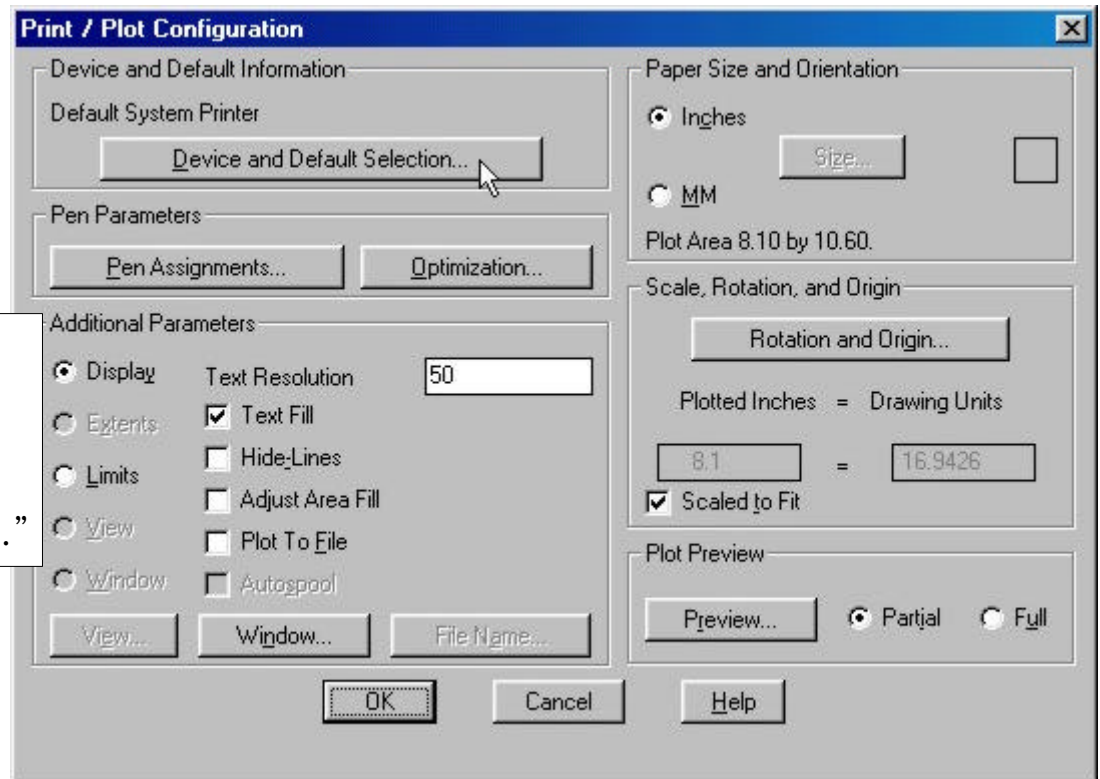
17

In the File menu, select Print.



18

In the Print/Plot Configuration window, click on “Device and Default Selection.”



18

Select the newly created plotter and click “OK” to make it the default plotter for AutoCAD.

